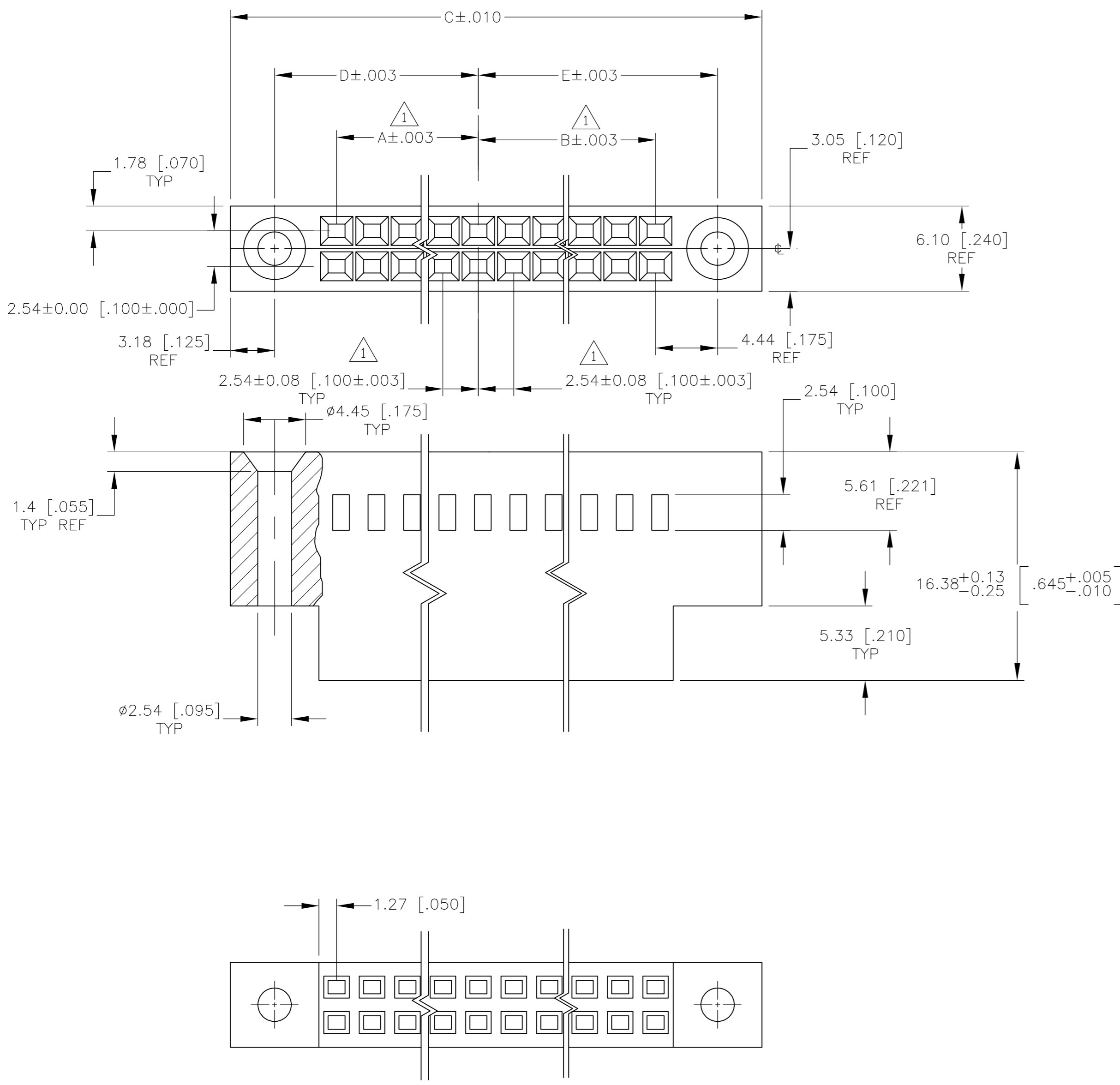


THIS DRAWING IS UNPUBLISHED. RELEASED FOR PUBLICATION
 © COPYRIGHT BY TYCO ELECTRONICS CORPORATION. ALL INTERNATIONAL RIGHTS RESERVED.

LOC	DIST	REVISIONS			
P	LTR	DESCRIPTION	DATE	DWN	APVD
AD	00	N1	REVISED PER ECO-10-007651	12APR10	HMR JO



- 1 CAVITY LOCATION DIMENSIONS INCREASE IN INCREMENTS OF .100 TOLERANCES NON-CUMULATIVE.
- 2 USE EXTRACTION TOOL 91052-1 TO REMOVE RECEPTACLE CONTACTS.
- 3 GLASS FILLED NYLON, COLOR: BLACK, PER ASTM D4066

	6.99 [.275]	9.53 [.375]	22.86 [.900]	2.54 [.100]	5.08 [.200]	8	2-86264-6
OBSOLETE	9.53 [.375]	9.53 [.375]	25.4 [1.000]	5.08 [.200]	5.08 [.200]	10	2-86264-5
OBSOLETE	9.53 [.375]	12.07 [.475]	27.94 [1.100]	5.08 [.200]	7.62 [.300]	12	2-86264-4
OBSOLETE	12.07 [.475]	12.07 [.475]	30.48 [1.200]	7.62 [.300]	7.62 [.300]	14	2-86264-3
	12.07 [.475]	14.61 [.575]	33.02 [1.300]	7.62 [.300]	10.16 [.400]	16	2-86264-2
OBSOLETE	14.61 [.575]	14.61 [.575]	35.56 [1.400]	10.16 [.400]	10.16 [.400]	18	2-86264-1
	14.61 [.575]	17.15 [.675]	38.1 [1.500]	10.16 [.400]	12.7 [.500]	20	2-86264-0
OBSOLETE	17.15 [.675]	17.15 [.675]	40.64 [1.600]	12.7 [.500]	12.7 [.500]	22	1-86264-9
OBSOLETE	17.15 [.675]	19.69 [.775]	43.18 [1.700]	12.7 [.500]	15.24 [.600]	24	1-86264-8
	19.69 [.775]	19.69 [.775]	45.72 [1.800]	15.24 [.600]	15.24 [.600]	26	1-86264-7
OBSOLETE	19.69 [.775]	22.23 [.875]	48.26 [1.900]	15.24 [.600]	17.78 [.700]	28	1-86264-6
OBSOLETE	22.23 [.875]	22.23 [.875]	50.8 [2.000]	17.78 [.700]	17.78 [.700]	30	1-86264-5
OBSOLETE	22.23 [.875]	24.76 [.975]	53.34 [2.100]	17.78 [.700]	20.32 [.800]	32	1-86264-4
OBSOLETE	24.76 [.975]	24.76 [.975]	55.88 [2.200]	20.32 [.800]	20.32 [.800]	34	1-86264-3
OBSOLETE	24.76 [.975]	27.31 [1.075]	58.42 [2.300]	20.32 [.800]	22.86 [.900]	36	1-86264-2
OBSOLETE	27.31 [1.075]	27.31 [1.075]	50.8 [2.400]	22.86 [.900]	22.86 [.900]	38	1-86264-1
	27.31 [1.075]	29.85 [1.175]	63.5 [2.500]	22.86 [.900]	25.4 [1.000]	40	1-86264-0
OBSOLETE	29.85 [1.175]	29.85 [1.175]	66.04 [2.600]	25.4 [1.000]	25.4 [1.000]	42	86264-9
	29.85 [1.175]	32.39 [1.275]	68.58 [2.700]	25.4 [1.000]	27.94 [1.100]	44	86264-8
OBSOLETE	32.39 [1.275]	32.39 [1.275]	71.12 [2.800]	27.94 [1.100]	27.94 [1.100]	46	86264-7
OBSOLETE	32.39 [1.275]	34.93 [1.375]	73.66 [2.900]	27.94 [1.100]	30.48 [1.200]	48	86264-6
OBSOLETE	34.93 [1.375]	34.93 [1.375]	76.2 [3.000]	30.48 [1.200]	30.48 [1.200]	50	86264-5
	34.93 [1.375]	37.47 [1.475]	78.74 [3.100]	30.48 [1.200]	33.02 [1.300]	52	86264-4
OBSOLETE	37.47 [1.475]	37.47 [1.475]	81.28 [3.200]	33.02 [1.300]	33.02 [1.300]	54	86264-3
OBSOLETE	37.47 [1.475]	40 [1.575]	83.82 [3.300]	33.02 [1.300]	35.56 [1.400]	56	86264-2

THIS DRAWING IS A CONTROLLED DOCUMENT. DWN 8-31-89 BOB BOLES
 CHK 9-14-89 J. GESFORD
 APVD 9-14-89 J. GESFORD
 PRODUCT SPEC
 APPLICATION SPEC
 WEIGHT
 CUSTOMER DRAWING

TOLERANCES UNLESS OTHERWISE SPECIFIED:
 0 PLC ± -
 1 PLC ± -
 2 PLC ± -
 3 PLC ± .005
 4 PLC ± -
 ANGLES ± -
 FINISH

Tyco Electronics Corporation
 Harrisburg, PA 17105-3608

NAME
 CONNECTOR, MOD IV, CRIMP SNAP-IN,
 DOUBLE ROW, .100X.100 CENTERS

SIZE A2 CAGE CODE 00779 DRAWING NO C=86264 RESTRICTED TO
 SCALE 4:1 SHEET 1 OF 1 REV N1